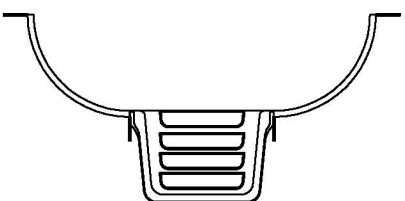


6' STEP



8' STEP

N/A



CLASSIC STEEL
14-0 X 28-0 CATALINA

PART#: ISK-RE-1428-48-STD	SURFACE AREA: (ft ²): 378	PERIMETER: 77'-0"
DATE: 01/01/07	LINER AREA (ft ²): 392	VOLUME (US Gal): 10,526
SCALE: 1/8" = 1'-0"	SFTY COVER AREA (ft ²): 480	VOLUME (Litres): 39,845

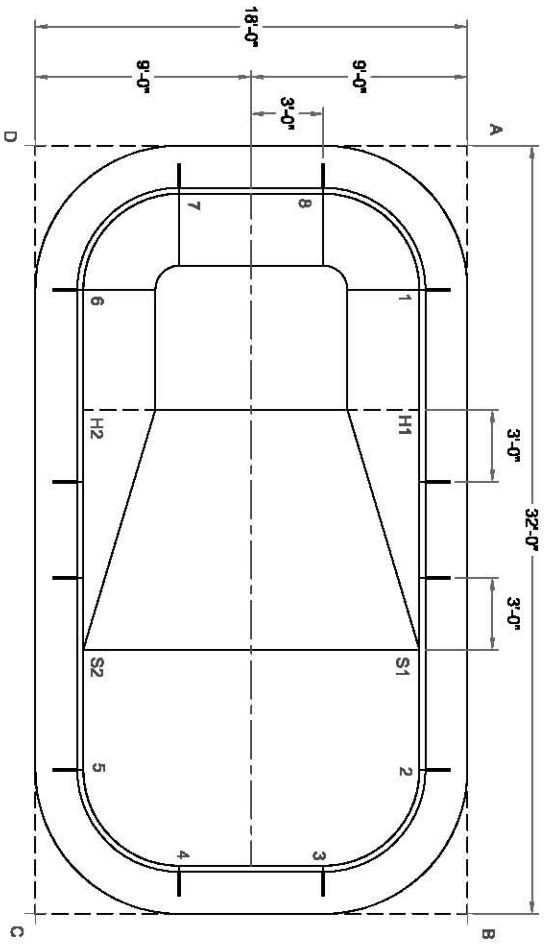


NON-DIVING POOL
USE OF DIVING EQUIPMENT
IS PROHIBITED

DWG#: CLRE48S1428-07

CATALINA

SHEET: 1 OF 2



	A	B	C	D
1	6'-4"	26'-1"	30'-6 1/4"	17'-1"
2	26'-1"	6'-4"	17'-1"	30'-6 1/4"
3	30'-7 1/4"	6'-4"	12'-2"	32'-3 3/4"
4	32'-3 3/4"	12'-2"	6'-4"	30'-7 1/4"
5	30'-6 1/4"	17'-1"	6'-4"	26'-1"
6	17'-1"	30'-6 1/4"	26'-1"	6'-4"
7	12'-2"	32'-3 3/4"	30'-7 1/4"	6'-4"
8	6'-4"	30'-7 1/4"	32'-3 3/4"	12'-2"
S1	21'-1 1/4"	11'-2 1/4"	19'-5"	26'-4 3/4"
S2	26'-4 3/4"	19'-5"	11'-2 1/4"	21'-1 1/4"
H1	11'-2 1/4"	21'-1 1/4"	26'-4 3/4"	19'-5"
H2	19'-5"	26'-4 3/4"	21'-1 1/4"	11'-2 1/4"
A	-	32'-0"	36'-8 1/2"	18'-0"

DIAGONALS	
1 TO 2	20'-0"
1 TO 3	24'-4"
1 TO 4	26'-0"
1 TO 5	24'-5"
1 TO 6	14'-0"
1 TO 7	10'-9 1/4"
1 TO 8	5'-8"
1 TO S1	15'-0"
1 TO S2	20'-6 1/4"
1 TO H1	5'-0"
1 TO H2	14'-10 1/2"
2 TO 3	5'-8"
2 TO 4	10'-9 1/4"
2 TO 5	14'-0"
2 TO 6	24'-5"
2 TO 7	26'-0"
2 TO 8	24'-4"
2 TO S1	5'-0"
2 TO S2	14'-10 1/2"
2 TO H1	15'-0"
2 TO H2	20'-6 1/4"
3 TO 4	6'-0"
3 TO 5	10'-9 1/4"
3 TO 6	26'-0"
3 TO 7	28'-7 3/4"
3 TO 8	28'-0"
3 TO S1	9'-10 1/4"
3 TO S2	13'-5 1/2"
3 TO H1	19'-5"
3 TO H2	21'-5 3/4"

BILL OF MATERIALS	STEP		
DESCRIPTION	NO	6'	8'
8'-0" STRAIGHT - HS10850M	1	1	-
8'-0" STRAIGHT - PLAIN	1	1	-
8'-0" STRAIGHT - HR	2	2	-
6'-0" STRAIGHT - PLAIN	2	1	-
4'-0" STRAIGHT - PLAIN	2	2	-
6" X 4" RADIUS 90° CORNER	4	4	-
A-FRAME	12	12	-
HARDWARE, STRAIGHT 150 PACK	2	2	-
REBAR, STAKE 18 in. (25 PACK)	1	1	-
OPTIONAL DECK SUPPORT	29	28	-