

CLASSIC STEEL
18-0 X 15-0 X 34-6 CAPE MAY RIGHT

PART#: ISK-NO-1834-00-STD

SURFACE AREA: (ft²): 484

PERIMETER: 86'-5"

DATE: 01/01/07

LINER AREA (ft²): 603

VOLUME (US Gal): 15,888

SCALE: 1/8" = 1'-0"

SFTY COVER AREA (ft²): 767

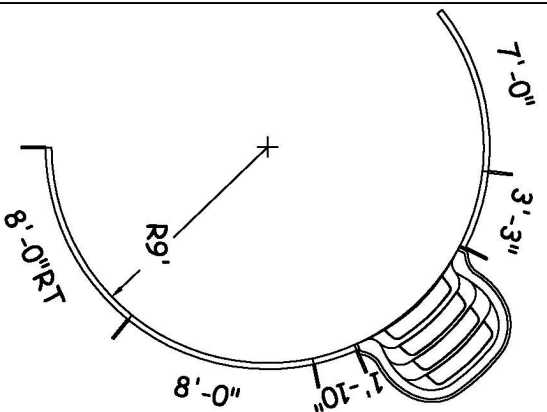
VOLUME (Litres): 60,142



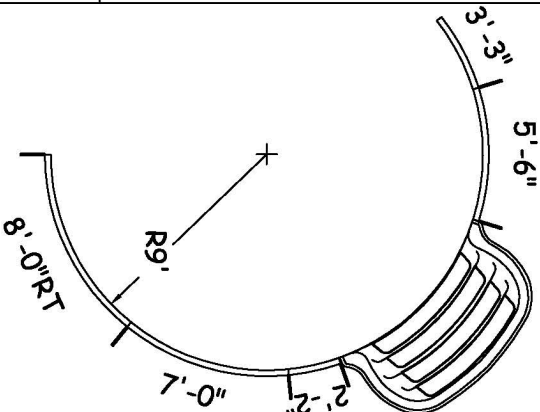
DIVING/SLIDING EQUIPMENT SHALL BE DESIGNED FOR SWIMMING POOLS AND SHALL BE INSTALLED IN ACCORDANCE WITH THE DIVING/SLIDING EQUIPMENT MANUFACTURER'S SPECIFICATIONS. PLEASE CONTACT THE DIVING/SLIDING EQUIPMENT MANUFACTURER FOR THEIR SPECIFICATIONS.

MEETS DEPTH AND SHAPE MINIMUM STANDARD ANS/SP15-2003

6' STEP



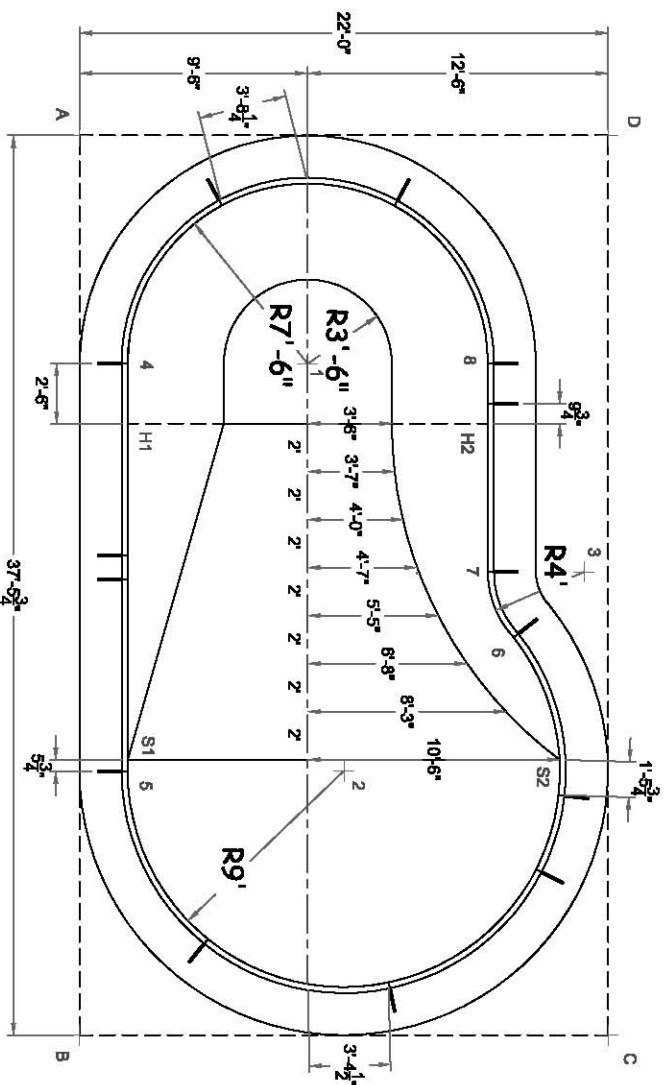
8' STEP



DWG#: CLN000S1834R07

SHEET: 1 OF 2

CAPE MAY



| | A | B | C | D |
|----|-------------|------------|-------------|-------------|
| 1 | 13'-5 1/4" | 29'-6 1/2" | 30'-7 3/4" | 15'-8 1/2" |
| 2 | 28'-8" | 15'-6 3/4" | 15'-6 3/4" | 28'-8" |
| 3 | 27'-9 1/4" | 28'-6 1/4" | 19'-3 3/4" | 18'-2 1/2" |
| 4 | 9'-8 1/2" | 28'-0 3/4" | 34'-4 3/4" | 22'-1 3/4" |
| 5 | 26'-6 3/4" | 11'-2" | 22'-9 3/4" | 33'-2 1/4" |
| 6 | 27'-7 3/4" | 24'-6 1/4" | 17'-0 1/4" | 21'-3 1/4" |
| 7 | 24'-10 3/4" | 25'-8 1/2" | 19'-11" | 18'-10 1/4" |
| 8 | 19'-5 3/4" | 32'-9" | 28'-5" | 10'-8 3/4" |
| S1 | 26'-1" | 11'-7 3/4" | 23'-0 3/4" | 32'-9 1/2" |
| S2 | 32'-9 1/2" | 23'-0 1/2" | 11'-7 3/4" | 26'-1" |
| H1 | 12'-2" | 25'-6 1/2" | 32'-4 1/2" | 23'-3 3/4" |
| H2 | 20'-9 3/4" | 30'-7 1/2" | 25'-11 1/2" | 13'-0" |
| A | - | 37'-5 3/4" | 43'-5 1/2" | 22'-0" |

| DIAGONALS | | |
|-----------|-------------|--|
| 1 TO 2 | 17'-0 1/2" | |
| 1 TO 3 | 14'-5" | |
| 1 TO 4 | 7'-6" | |
| 1 TO 5 | 18'-6 3/4" | |
| 1 TO 6 | 14'-3 1/4" | |
| 1 TO 7 | 11'-5 3/4" | |
| 1 TO 8 | 7'-6" | |
| 1 TO S1 | 18'-1 1/2" | |
| 1 TO S2 | 19'-6 1/2" | |
| 1 TO H1 | 7'-10 3/4" | |
| 1 TO H2 | 7'-10 3/4" | |
| 2 TO 3 | 13'-0" | |
| 2 TO 4 | 19'-2 1/2" | |
| 2 TO 5 | 9'-0" | |
| 2 TO 6 | 9'-0" | |
| 2 TO 7 | 10'-2 3/4" | |
| 2 TO 8 | 18'-0" | |
| 2 TO S1 | 9'-0 1/4" | |
| 2 TO S2 | 9'-0" | |
| 2 TO H1 | 17'-0 1/2" | |
| 2 TO H2 | 15'-8" | |
| 3 TO 4 | 20'-10 3/4" | |
| 3 TO 5 | 20'-8 3/4" | |
| 3 TO 6 | 4'-0" | |
| 3 TO 7 | 4'-0" | |
| 3 TO 8 | 9'-6 3/4" | |
| 3 TO S1 | 20'-6 1/2" | |
| 3 TO S2 | 7'-10 1/2" | |
| 3 TO H1 | 19'-11 3/4" | |
| 3 TO H2 | 7'-4 1/4" | |
| 4 TO 5 | 17'-0" | |
| 4 TO 6 | 19'-8 1/2" | |
| 4 TO 7 | 17'-4" | |
| 4 TO 8 | 15'-0" | |
| 4 TO S1 | 16'-6 1/4" | |
| 4 TO S2 | 24'-5" | |
| 4 TO H1 | 2'-6" | |
| 4 TO H2 | 15'-2 1/2" | |
| 5 TO 6 | 17'-0 1/4" | |
| 5 TO 7 | 17'-1 3/4" | |
| 5 TO 8 | 22'-8" | |
| 5 TO S1 | 0'-5 3/4" | |
| 5 TO S2 | 18'-0" | |
| 5 TO H1 | 14'-8" | |
| 5 TO H2 | 20'-10 1/4" | |

| DESCRIPTION | NO | 6' | 8' |
|-------------------------------|----|----|----|
| 8'-0" STRAIGHT - HS10850M | 1 | 1 | 1 |
| 8'-0" STRAIGHT - PLAIN | 1 | 1 | 1 |
| 7'-0" STRAIGHT - PLAIN | 1 | 1 | 1 |
| 1'-0" STRAIGHT - PLAIN | 1 | 1 | 1 |
| 8'-0" X 9'-0" RADIUS - PLAIN | 2 | 1 | - |
| 8'-0" X 9'-0" RADIUS - HR | 1 | 1 | 1 |
| 7'-0" X 9'-0" RADIUS - PLAIN | 1 | 1 | 1 |
| 5'-6" X 9'-0" RADIUS - PLAIN | - | - | 1 |
| 3'-3" X 9'-0" RADIUS - PLAIN | 1 | 1 | 1 |
| 2'-2" X 9'-0" RADIUS - PLAIN | - | - | 1 |
| 1'-10" X 9'-0" RADIUS - PLAIN | - | - | 1 |
| 8'-0" X 7'-6" RADIUS - PLAIN | 1 | 1 | 1 |
| 8'-0" X 7'-6" RADIUS - HR | 1 | 1 | 1 |
| 7'-6" X 7'-6" RADIUS - PLAIN | 1 | 1 | 1 |
| 3'-0" X 4'-0" REV RAD - PLAIN | 1 | 1 | 1 |
| A-FRAME | 14 | 15 | 15 |
| HARDWARE STRAIGHT 160 PACK | 2 | 2 | 2 |
| REBAR, STAKE 18 IN. (25 PACK) | 2 | 2 | 2 |
| OPTIONAL DECK SUPPORT | 34 | 33 | 32 |

| DIAGONALS | | |
|-----------|-------------|--|
| 6 TO 7 | 2'-11 1/4" | |
| 6 TO 8 | 11'-5 3/4" | |
| 6 TO S1 | 16'-10 1/4" | |
| 6 TO S2 | 5'-5 1/4" | |
| 6 TO H1 | 18'-4 1/2" | |
| 6 TO H2 | 8'-11 3/4" | |
| 7 TO 8 | 8'-8 1/4" | |
| 7 TO S1 | 16'-11" | |
| 7 TO S2 | 8'-4 1/2" | |
| 7 TO H1 | 16'-2 3/4" | |
| 7 TO H2 | 6'-2 1/4" | |
| 8 TO S1 | 22'-3 3/4" | |
| 8 TO S2 | 16'-9 1/4" | |
| 8 TO H1 | 15'-2 1/2" | |
| 8 TO H2 | 2'-6 1/4" | |
| S1 TO S2 | 17'-11 3/4" | |
| S1 TO H1 | 14'-0" | |
| S1 TO H2 | 20'-6 1/4" | |
| S2 TO H1 | 22'-9 1/2" | |
| S2 TO H2 | 14'-3 3/4" | |
| H1 TO H2 | 15'-0" | |