

**CLASSIC STEEL**

**18-6 X 20-7 X 35-7 OFFSET SEVILLE RIGHT**

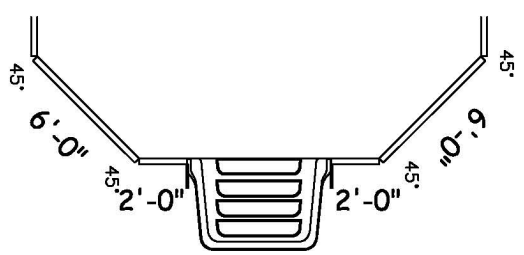
<b>Part#:</b> ISK-OS-1836-00-STD	<b>Surface Area:</b> (ft <sup>2</sup> ): 620	<b>Perimeter:</b> 100'-0"
<b>Date:</b> 01/01/07	<b>Liner Area:</b> (ft <sup>2</sup> ): 658	<b>Volume (US Gal):</b> 20,353
<b>Scale:</b> 1/8" = 1'-0"	<b>Sfty Cover Area:</b> (ft <sup>2</sup> ): 849	<b>Volume (Litres):</b> 77,044



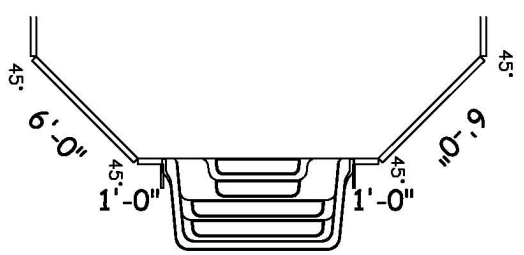
DIVING/SLIDING EQUIPMENT SHALL BE DESIGNED FOR SWIMMING POOLS AND SHALL BE INSTALLED IN ACCORDANCE WITH THE DIVING/SLIDING EQUIPMENT MANUFACTURER'S SPECIFICATIONS. PLEASE CONTACT THE DIVING/SLIDING EQUIPMENT MANUFACTURER FOR THEIR SPECIFICATIONS.

MEETS DEPTH AND SHAPE MINIMUM STANDARD ANS/SP15-2003

**6' STEP**



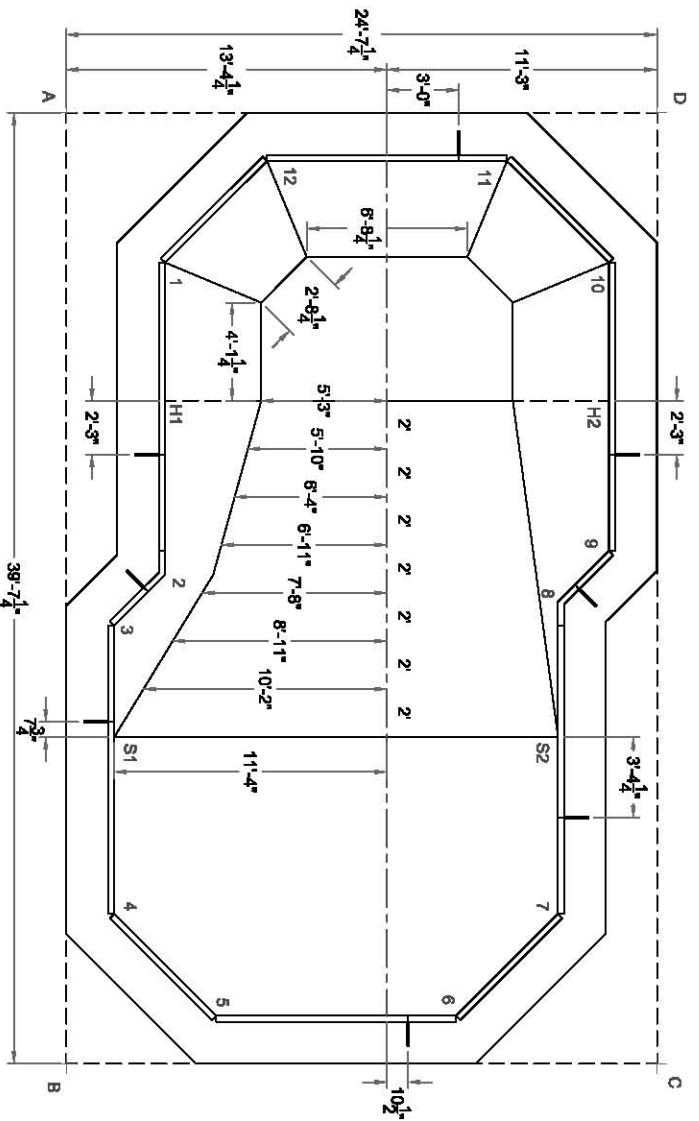
**8' STEP**



**OFFSET SEVILLE**

**DWG#:** CLOS00S1836R07

**SHEET:** 1 OF 2



	A	B	C	D
1	7'-5 3/4"	33'-7 1/2"	39'-1 3/4"	21'-5"
2	19'-8 1/4"	20'-9 1/4"	28'-10 1/2"	28'-1 1/4"
3	21'-5 1/2"	18'-4 1/4"	29'-0 1/2"	31'-1 1/4"
4	33'-5"	6'-6 3/4"	23'-5 1/2"	40'-3 1/2"
5	38'-1 1/2"	6'-6 3/4"	18'-5 3/4"	41'-10 1/4"
6	40'-11 1/2"	18'-4 1/2"	8'-7 1/4"	38'-6 1/4"
7	39'-1 3/4"	21'-5"	7'-5 3/4"	33'-7 1/2"
8	28'-10 1/2"	28'-1 1/4"	19'-8 1/4"	20'-9 1/4"
9	29'-0 1/2"	31'-1 1/4"	21'-5 1/2"	18'-4 1/4"
10	23'-5 1/2"	40'-3 1/2"	33'-5"	6'-6 3/4"
11	18'-5 3/4"	41'-10 1/4"	38'-1 1/2"	6'-6 3/4"
12	8'-7 1/4"	38'-6 1/4"	40'-11 1/2"	16'-4 1/2"
S1	26'-1"	13'-9"	26'-4 3/4"	34'-5 1/2"
S2	33'-1 1/4"	24'-7"	14'-2 1/2"	26'-4"
H1	12'-8 1/4"	27'-11"	34'-4 1/2"	23'-9"
H2	25'-7 1/4"	35'-8 1/4"	27'-8 1/4"	12'-2"
A	-	39'-7 1/4"	46'-7 1/2"	24'-7 1/4"

DIAGONALS	
1 TO 2	13'-0"
1 TO 3	15'-3 1/4"
1 TO 4	27'-2 1/2"
1 TO 5	31'-5 1/4"
1 TO 6	33'-7 1/2"
1 TO 7	31'-8"
1 TO 8	21'-7 1/2"
1 TO 9	22'-0 1/2"
1 TO 10	18'-5 3/4"
1 TO 11	14'-10 1/4"
1 TO 12	6'-0"
1 TO S1	19'-10 1/2"
1 TO S2	25'-7 3/4"
1 TO H1	5'-9"
1 TO H2	19'-4 1/4"
2 TO 3	3'-0"
2 TO 4	14'-3 1/4"
2 TO 5	18'-5 3/4"
2 TO 6	22'-0"
2 TO 7	21'-7 1/2"
2 TO 8	16'-4 3/4"
2 TO 9	18'-6 1/4"
2 TO 10	22'-7 1/4"
2 TO 11	22'-4 1/4"
2 TO 12	17'-9"
2 TO S1	7'-1"
2 TO S2	17'-8 1/2"
2 TO H1	7'-3"
2 TO H2	19'-10 1/4"
4 TO 5	6'-0"
4 TO 7	18'-5 3/4"
4 TO 9	25'-6 3/4"
4 TO 11	35'-4 1/2"
4 TO S1	7'-4 1/4"
4 TO S2	19'-10 3/4"
4 TO H1	21'-5 3/4"
4 TO H2	29'-8 1/4"
5 TO 7	14'-10 1/4"
5 TO 9	25'-4 1/4"
5 TO 11	37'-7 1/4"
5 TO S1	12'-4 1/4"
5 TO S2	18'-4 1/2"
5 TO H1	25'-8 1/4"
5 TO H2	30'-4 3/4"
6 TO 8	17'-9"
6 TO 10	32'-0"
6 TO 12	36'-5 1/2"
6 TO S1	18'-4 1/2"
6 TO S2	12'-4 1/4"

BILL OF MATERIALS DESCRIPTION	STEP		
	NO	6'	8'
8'-0" STRAIGHT - HS10850M	1	1	1
8'-0" STRAIGHT - PLAIN	3	2	2
8'-0" STRAIGHT - HR	2	2	2
8'-0" STRAIGHT - PLAIN	4	4	4
4'-0" STRAIGHT - PLAIN	4	4	4
2'-0" STRAIGHT - PLAIN	4	5	3
1'-0" STRAIGHT - PLAIN	-	-	2
1'-0" X 1'-0" X 45° STRAIGHT REV	2	2	2
CONNECTOR 45° 12GA	10	10	10
HARDWARE 45° (72 PACK)	1	1	1
HARDWARE 45° (15 PACK)	2	2	2
A-FRAME	8	9	9
HARDWARE STRAIGHT 150 PACK	2	2	2
REBAR, STAKE 18 IN. (25 PACK)	2	2	2
OPTIONAL DECK SUPPORT	28	27	27

DIAGONALS	
6 TO H1	28'-4"
6 TO H2	26'-4 3/4"
7 TO 8	13'-0"
7 TO 10	27'-2 1/2"
7 TO 12	33'-7 1/2"
7 TO S1	19'-10 3/4"
7 TO S2	7'-4 1/4"
7 TO H1	26'-11"
7 TO H2	21'-5 3/4"
10 TO 11	6'-0"
10 TO 12	14'-10 1/4"
10 TO S1	28'-6 1/2"
10 TO S2	19'-10 1/2"
10 TO H1	19'-4 1/4"
10 TO H2	5'-9"
S1 TO S2	18'-5 3/4"
S1 TO H1	14'-2"
S1 TO H2	24'-11"
S2 TO H1	21'-6 1/2"
S2 TO H2	14'-2"
H1 TO H2	18'-5 3/4"